



## INSTALLATION INSTRUCTIONS CATALYTIC CONVERTER / TEST PIPE and/or CAT-BACK MUFFLER 1985-1989 Toyota MR2

**WARNING! RISK OF ELECTRIC SHOCK AND/OR FIRE.  
DISCONNECT BATTERY NEGATIVE CABLE BEFORE PROCEEDING!**

**A NOTE ON SAFETY:** YOU are responsible for safely and correctly installing and using any items purchased. Please read and follow these installation instructions carefully. Observe all safety precautions. Use eye protection, protective gloves, and common sense. Make sure the rear of the car is safely supported on ramps or an overhead lift. Chock the wheels so that the car cannot roll. **NEVER WORK UNDER A CAR SUPPORTED ONLY BY A JACK.**

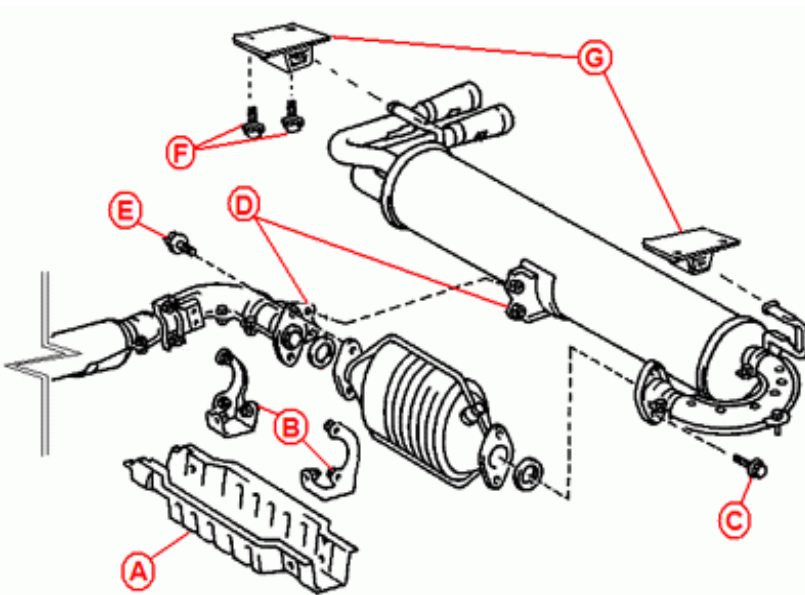
**PLEASE READ ALL INSTRUCTIONS CAREFULLY BEFORE BEGINNING ANY WORK.  
ALLOW ENGINE AND EXHAUST SYSTEM TO COOL BEFORE WORKING ON THE CAR.**

**OVERVIEW:** These instructions cover the removal of the car's original catalytic converter and/or muffler, and replacement of either or both with SV3Power Products replacement components.

**COMPONENT CHECKLIST:** This operation requires the following parts. These are typically included with new SV3Power Products components:

- 1x Toyota gasket 90917-06044 for NA cars, 90917-06054 for SC (x2 if replacing catalytic converter)
- Two each M10x1.25 bolts with locking nuts (four each if replacing catalytic converter)
- Two each M8x1.25 bolts with locking nuts for muffler brace

In addition, anti-seize compound and Permatex Ultra Copper sealant (not included) are recommended.



**NOTE:** Exhaust system hardware is susceptible to damage by rust, extreme heat, age, and the use of incorrect tools. Proceed carefully to avoid causing further damage. You may need to spray all fasteners in penetrating oil and come back after they have been allowed to soak.

**1. Remove heat shield A from brackets B.** This gives access to the nuts welded to the braces, which helps when removing the muffler or catalytic converter.

**2. Loosen two bolts C and two bolts D** holding the muffler to the rest of the exhaust system. Bolts D are located on the support brace between the muffler and downpipe. If you are removing the catalytic converter, also **loosen two bolts E** holding the cat to the downpipe. Break the bolts loose, but do not fully remove them yet. Work with one bolt at a time. As it loosens, spray some penetrating oil on the threads, then thread the bolt back and forth, into its nut and back out again, to help remove rust.

**NOTE:** Move on to the next step only when you are certain that each bolt can be fully removed.

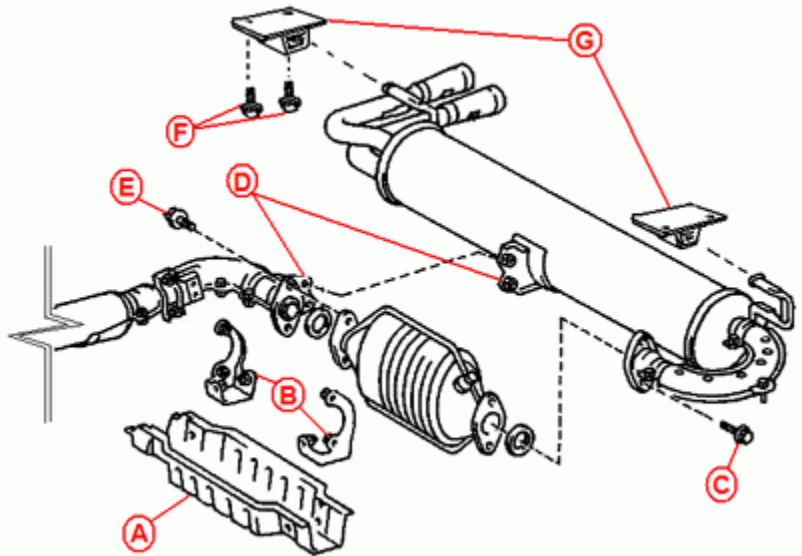
**3. Gently support the muffler** with jackstands or a floor jack so that it does not suddenly fall off when unbolted. Tape a thick towel or heavy cardboard around the muffler tips so that they cannot damage the car's paintwork.

**4. Loosen four bolts F** holding muffler mounts **G** to the body of the car. You may need wobble extensions or small hands to get to these bolts. Unscrew the bolts most of the way but do not fully remove them yet.

**5. Remove bolts D, then C,** making sure that the muffler remains supported.

**6. Remove bolts F,** then, slowly and very carefully, **lower the muffler** away from the car. Support the muffler so that it does not suddenly fall off the car or its supports.

**7. Remove bolts E and remove the catalytic converter** if you are replacing it at this time.



**NOTE:** If you are also changing the car's header or exhaust manifold and/or downpipe, it is recommended that you install those before installing the catalytic converter, test pipe, and/or muffler. Please refer to the installation instructions for those products.

**8. Clean any loose rust and scale** from all flanges and mounting surfaces with a wire brush, then **test fit your new parts** to make sure they will bolt up to the existing components. Some OEM downpipes require that you use a hacksaw to trim back any excess tube sticking through the flange.

**9. Installation is the reverse of removal.** Apply anti-seize compound to all bolt threads before installing. Leave all bolts loose until all components are installed and all bolts are in place. Gasket sealant is not required, but it can help hold gaskets in place during installation.

**NOTE:** Catalytic converters are installed with heat shield (if equipped) or model number toward the ground. Resonated test pipes are installed with the open side of the louvers facing upstream, toward the engine.

**10.** Once you are satisfied that the exhaust system is installed and aligned correctly, torque fasteners to the following values:

- Catalytic converter or test pipe flange nuts, muffler flange nuts, muffler mount bolts: 32 lb-ft
- Muffler brace nuts: 14 lb-ft.

**SAFETY CHECK:** Make sure all components are mounted securely. Verify that all hoses, cables, wires, insulation, etc., are kept safely away from any part of the exhaust system. Remove any spilled oil.

**11. Reconnect battery negative cable.** Start the engine and verify that there are no exhaust leaks, rattles, or unusual sounds before test driving the vehicle.

**SUPPORT:** Most questions can be answered by reviewing the FAQ and/or the product installation instructions included with your order. Please contact SV3Power Products via [www.sv3power.com](http://www.sv3power.com) with any other installation questions or concerns. Please share any questions or suggestions you have to help improve this product and/or other products you would like to see developed for the first generation MR2.

**Thank you for your purchase and for supporting the MR2 community!**